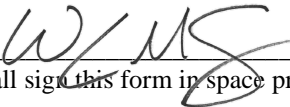


**INFORMAL QUOTE PACKAGE
FIRE STATION 1 AND PD RAPID SETTING SLURRY SEAL - REBID**

Contractor: INTERMOUNTAIN SLURRY SEAL, INC Name of Authorized Representative: WESLY SOSA Title: PROJECT MANAGER

SIGNATURE of Authorized Representative:  Date: 8/16/16
[An authorized representative of the Contractor shall sign this form in space provided. An unsigned quote may be disqualified.]

ADDRESS: 1120 TERMINAL WAY CITY: RENO STATE: NV ZIP: 89502

Telephone Number(s): Office Number: (775) 355-1355 Facsimile Number: (775) 355-3458

Is Contractor a Corporation? YES [] NO

Federal Tax Identification Number # 87-3007259

CONTRACTOR'S LICENSE #: NV 19821005646 Expiration Date: 03/31/2018

License limitations \$ UNLIMITED

Contractor qualified by State Contractors Board Yes [] No

City of Sparks Business License No. (Required if awarded): 063994

**ONE (1) COMPLETE ORIGINAL OF THE INFORMAL QUOTE SCHEDULE and ANY ADDENDUM(s)
MUST BE DELIVERED, EMAILED, OR FAXED TO THE
COMMUNITY SERVICES DEPARTMENT
AT 431 PRATER WAY, SPARKS, NV 89431
BY 3:00 P.M. ON AUGUST 16, 2016
ATTN: BOB SCHRICKER
(775) 353-2305 PHONE, (775) 691-4573 CELL, (775) 353-1635 FAX, EMAIL: rschricker@cityofsparks.us**


The Contractor declares that they have carefully examined the specifications, the forms of this Informal Quote Proposal, and agrees that if this proposal is accepted, they will contract with the City of Sparks in the State of Nevada, at their own cost and expense, to do all the work and/or furnish all material and/or services necessary to completely perform said Contract in the manner and time prescribed and in accordance with and subject to all applicable laws of the State of Nevada and that they will take in full payment therefore, the following unit prices:

F.O.B.: DESTINATION SITE SPARKS, NEVADA - PREPAID

**INFORMAL QUOTE PACKAGE
FIRE STATION 1 AND PD RAPID SETTING SLURRY SEAL - REBID**

Contractor: INTERMOUNTAIN SLURRY SEAL, INC Name of Authorized Representative: WESLY SOSA

Title: PROJECT MANAGER

SIGNATURE of Authorized Representative: 

Date: 8/16/2016

An authorized representative of the Contractor shall sign this form in space provided. An unsigned quote may be disqualified.

BASE BID – FIRE STATION 1					
Item No.	Quantity	Unit	Description	Unit Price	Total Price
1	24,085	SF	Provide and install, crack seal, Type II Rapid Setting Slurry Seal, (including double seal) and restriping of parking lots as indicated on the attached maps, complete in place, per square foot.	\$ <u>.58</u> /SF	\$ <u>13969.30</u>
2	1	LS	Force Account	\$ 5,000	\$ 5,000

TOTAL BASE BID \$ 18969.30

(Written amount) Eighteen Thousand Nine Hundred Sixty Nine and 30/100.....

OPTION #1 – SPARKS POLICE DEPARTMENT – NORTH PARKING LOT					
Item No.	Quantity	Unit	Description	Unit Price	Total Price
O-1	11,338	SF	Provide and install, crack seal, Type II Rapid Setting Slurry Seal, and restriping of parking lots as indicated on the attached maps, complete in place, per square foot.	\$ <u>.70</u> /SF	\$ <u>7936.60</u>

TOTAL OPTION #1 \$ 7936.60

(Written amount) Seven Thousand Nine Hundred Thirty Six and 60/100.....

OPTION #2 – SPARKS POLICE DEPARTMENT – SOUTH PARKING LOT					
Item No.	Quantity	Unit	Description	Unit Price	Total Price
O-2	73,590	SF	Provide and install, crack seal, Type II Rapid Setting Slurry Seal, and restriping of parking lots as indicated on the attached maps, complete in place, per square foot	\$ <u>.35</u> /SF	\$ <u>25756.50</u>

TOTAL OPTION # 2 \$ 25756.50

(Written amount) Twenty Five Thousand Seven Hundred Fifty Six and 50/100.....

TOTAL BASE BID + OPTION #1 + OPTION #2 \$ 52662.40

(Written amount) Fifty Two Thousand Six Hundred Sixty Two and 40/100

Determination of the lowest quote will be based on the combination of the “Base Bid plus Option #1 and Option #2.” The City of Sparks may or may not exercise the Option/Options but they shall be used in determination of the lowest quote.

The quantity of the above contingent item(s) of work, as set forth on the quote schedule represent no actual estimate, is nominal only and may be greatly increased or decreased or reduced to zero. The increase or reduction of this quantity as compared with that set forth on the informal quote schedule shall not constitute a basis for claim by the Contractor for extra payment or damages.

City of Sparks reserves the right and privilege to accept or reject any or all quotes or parts thereof, based solely on the judgment of representatives of the City of Sparks.

**INFORMAL QUOTE PACKAGE
FIRE STATION 1 AND PD RAPID SETTING SLURRY SEAL - REBID**

Unless indicated otherwise within the specific quote item as described in this section, the Engineer's estimated quantity as contained in the quote schedule shall be the final pay quantity. For quote items measured in lineal feet, the quantities are estimated by taking the horizontal projected lengths. For quote items measured in square feet, the quantities are estimated by taking the horizontal projected areas.

The Engineer's estimated quantity, as contained in the quote schedule, is based on the details and dimensions shown on the plans, and no guarantee is made that the quantity, which can be determined by measurements and computations, will equal the estimated quantity. No allowance will be made in the event that the quantity based on measurements and computations does not equal the estimated quantity.

In case of discrepancy between the quantity contained in the quote schedule and the quantity or summation of quantities for the same item shown on the plans, payment will be based on the quantity contained in the quote schedule.

If the quantity of a particular item of work is intentionally increased or decreased during construction, the final pay quantity of that item will be adjusted to reflect the change.

Item 1 – Provide and Install, Crack Seal, Type II Rapid Setting Slurry Seal, and Restriping of Parking Lots

This item shall include all labor, equipment, materials, and other incidentals necessary, but not limited to, crack sealing, preparing the surface, necessary cleaning, and placing Type II Rapid Setting Slurry Seal. The minimum application rate for the Type II Rapid Setting Slurry Seal is 11 lbs/sqyd. Work shall also include restriping all of the parking lot areas depicted in the attached maps and as directed by the City of Sparks representative.

Areas as shown on the plans that require placement of a double Rapid Setting Slurry Seal shall be cleaned of all loose material including but not limited to asphalt, debris and vegetation to a smooth and uniform surface, and placement of an SS1h (50/50 blend) at a minimum application of .15 gls/sqyd. SS1h shall be placed prior to placement of the first application of the Rapid Setting Slurry Seal.

Payment will be on a square foot basis, complete in place. Payment for placement of the double Rapid Setting Slurry Seal will be measured for each application or "lift" placed, on a square foot basis.

Item 2 –Force account

A force account has been established for this project and shall be included in each quote. The force account will be utilized only as necessary for extra work authorized and approved in advance by the City of Sparks representative.

Item O-1 and O-2 – Provide and Install, Crack Seal, Type II Rapid Setting Slurry Seal, and Restriping of Parking Lots

This item shall include all labor, equipment, materials, and other incidentals necessary, but not limited to, crack sealing, preparing the surface, necessary cleaning, and placing Type II Rapid Setting Slurry Seal. The minimum application rate for the Type II Rapid Setting Slurry Seal is 12 lbs/sqyd. Work shall also include restriping all of the parking lot areas depicted in the attached maps and as directed by the City of Sparks representative.

Payment will be on a square foot basis, complete in place.

**INFORMAL QUOTE PACKAGE
FIRE STATION 1 AND PD RAPID SETTING SLURRY SEAL - REBID**

LOCATION

The project location includes three parking lots at Sparks Fire Station No. 1 (1605 Victorian Ave) and two parking lots at Sparks Police Department (1701 E. Prater Way), as indicated by the attached maps.

TIME SCHEDULE

No work shall be performed on either site from Wednesday, August 31, 2016 thru Monday, September 5, 2016.

One (1) week prior notice and coordination with the project manager and fire/police department representatives is required prior to starting work. Work hours will be 7:00 AM to 5:00 PM.

Should Option #2 be awarded, the Contractor will need to complete the work in two (2) phases as follows:

Phase 1 – Half of the parking lot area, including placement of all pavement markings;

Phase 2 – Remaining half of the parking lot area, including placement of all pavement markings

Contractor shall allow a minimum of 18-hours between completion of Phase 1 and start of Phase 2

SPECIFICATIONS

Unless specified otherwise, all work shall be completed in accordance with the plans and the “Standard Specifications for Public Works Construction (Orange Book)”, current edition.

**TECHNICAL SPECIFICATIONS
FIRE STATION 1 AND PD RAPID SETTING SLURRY SEAL - REBID**

SECTION 200.02 – AGGREGATES FOR RAPID SETTING SLURRY SEAL

200.02.01 – DESCRIPTION

Rapid Setting Slurry Seal aggregates shall conform to the requirements as shown in these Technical Specifications.

200.02.06 - AGGREGATES FOR RAPID SETTING SLURRY SEAL

General: The mineral aggregate used shall conform to the TYPE II gradation listed below for the Rapid Setting Slurry Seal. The aggregate shall be 100% crushed stone such as granite, slag, limestone, or other high quality aggregate. The material shall be free from vegetable matter and other deleterious substances. All aggregate shall be free of caked lumps and oversize particles.

Gradation: When tested by AASHTO T27, ASTM C136, and ASTM C117 the aggregate (including mineral filler) shall meet the following gradation:

SIEVE SIZE	TYPE II % Passing
3/8 (9.5mm)	100
No. 4 (4.75mm)	90 -100
No. 8 (2.36mm)	65 – 90
No. 16 (1.18mm)	45 – 70
No. 30 (600um)	30 – 50
No. 50 (300um)	18 – 30
No. 100 (150um)	10 – 21
No. 200 (75um)	5 – 15

Quality Tests: The Type II aggregate shall meet the following requirements:

TEST	TEST METHOD	SPECIFICATION
SAND EQUIVALENT	ASTM D2419A	65 min.
PLASTICITY	ASTM D4398	Non-plastic
SOUNDNESS	ASTM C88	10% max using Na ₂ SO ₄ or 15% max using MgSO ₄
HARDNESS	ASTM C131	25% max at 500 revolutions on gradation D
DURABILITY INDEX	CAL TEST 229	70 min.
SPECIFIC GRAVITY & ABSORPTION	ASTM C128	Report on

201.07 – HOT-APPLIED CRACK FILLER

Material: Material shall be CrafcO PolyFlex Type 2 or approved equal.

SECTION 318 – RAPID SETTING SLURRY SEAL

318.01 – DESCRIPTION

The work covered by this specification includes the mixing, application, testing, construction and quality control required by the proper application of an emulsified asphalt Rapid Setting Slurry Seal in accordance with these Technical Specifications or as established by the Engineer.

318.01.01 – RAPID SETTING SLURRY SEAL

This work shall consist of mixing polymer modified asphalt emulsion, aggregate, mineral filler, set-control additives, and water and spreading the mixture on a surface or pavement where shown on the vicinity maps for Fire Station 1 and Police Department, as specified in these Technical Specifications, and as directed by the Project Coordinator. The mix should be capable of being spread in variably thick cross-sections (wedges, wheel path depressions, scratch courses and surfaces) which, **after a 10 minute set time** and curing for initial traffic consolidation, resist deformation throughout the entire design tolerance of bitumen content.

The Contractor shall have a proven representative that has placed rapid setting slurry seal with a performance period of two (2) years minimum and a performance reference letter from the owner it was placed for. The representative shall provide the City of Sparks with references and a resume stating their experience with the system that will be used on this contract. For the purposes of this contract the definition of system includes the aggregate, asphalt, additives, equipment, and crew placement.

318.02 – MATERIAL

The material for Rapid Setting Slurry Seal immediately prior to mixing shall conform to the following requirements:

Emulsified Asphalt: The emulsified asphalt shall be homogenous and shall be a polymer modified quick-setting, quick-traffic cationic asphalt emulsion. The polymer material shall be co-milled with the emulsion solution. The emulsion manufacturer shall certify that the emulsion contains a minimum of 4% polymer solids based on the mass of asphalt (asphalt residual) within the emulsion. Manufacturer shall certify that the asphalt used in the Rapid Setting Slurry Seal emulsion. The emulsified asphalt shall be within $\pm 1\%$ of the design emulsion content.

The CCS-1h polymer modified quick-traffic asphalt emulsion shall conform to the following requirements when tested in accordance with the specified test method:

TEST	TEST METHOD	SPECIFICATION
Viscosity, Saybolt Fural at 77°F. (25°C.)	AASHTO T59	16-90 seconds
Storage Stability Test 24 hour	AASHTO T59	1% maximum
Settlement, 5 day	AASHTO T59	5% maximum
Distillation	AASHTO T59	3% maximum
#Residue	AASHTO T59	64% minimum

TEST ON RESIDUE	TEST METHOD	SPECIFICATION
Penetration, 77°F. (25°C.) 100 g, 5s	AASHTO T49	40-90 dmm
Ductility, 77°F (25°C), 5cm/min	AASHTO T51	60 cm minimum
#Softening Point, Degrees F. Ring and Ball	AASHTO T53	142° minimum
Polymer Content * *Solid polymer content based on weight of asphalt	AASHTO T53	4% minimum
Torsional Recovery	CTM 332	18% minimum

#Quality assurance testing of materials not meeting the specification limits above will be subjected to 100% pay reduction and removal/replacement (see Section 318.12). The Engineer may, upon consideration of the specific circumstances, reduce or waive mitigation and/or pay reduction, or combine portions of mitigation and pay reduction.

Aggregate: The aggregate shall conform to Section 200.02.06 - Aggregates for Rapid Setting Slurry Seal of these Technical Specifications.

Mineral Filler: Mineral filler shall be any recognized brand of non-air entrained Portland Cement or hydrated lime that is free of lumps. The type and amount of mineral filler needed shall be determined by the laboratory mix design and will be considered as part of the mineral gradation requirement. An increase or decrease of less than one-percent may be permitted when the Rapid Setting Slurry Seal is being placed if it is found to be necessary for better consistency or set times.

Water: Water shall be of such quality that the asphalt will not separate from the emulsion before the Rapid Setting Slurry Seal is in place on the pavement. Water shall be potable and compatible with the Rapid Setting Slurry Seal mix from an approved source. The Contractor must ensure compatibility.

Additive: Per the mix design for the Rapid Setting Slurry Seal.

318.02 – MIX DESIGN

1. General

The Contractor shall submit to the Engineer for approval a laboratory report of tests and proposed mix design for a Type II Rapid Setting Slurry Seal to be used on the project, a minimum of five (5) working days prior to the preconstruction meeting.

The Rapid Setting Slurry Seal mixture shall be spread by means of a spreader box conforming to the following requirements:

1. Spreader Box:

The spreader box shall be capable of spreading a traffic lane width and shall have strips of flexible rubber belting or similar material on each side of the spreader box and in contact with the pavement to positively prevent loss of Rapid Setting Slurry Seal from the ends of the box. All spreader boxes over 7½ feet (2.28 meters) in application width shall have baffles, reversible motor driven augers, or other suitable means, to insure uniform application on super elevated sections and shoulder slopes. Spreader box skids shall be maintained in such a manner as to prevent chatter (wash boarding) in the finished mat.

The spreader box shall have a double strike-off blade design at the rear of the box. The first strike-off blade shall be made of steel or stiff rubber and the second strike-off blade (attached to the first blade) shall be made of a flexible material. Rear flexible strike-off blades shall make close contact with the pavement, and shall be capable of being adjusted to the various crown shapes so as to apply a uniform Rapid Setting Slurry Seal. A secondary strike-off blade attached to the rear of the spreader box (located behind the double strike-off blades at the rear of the spreader box) shall be provided and shall be adjustable. It shall be designed and operated such that a uniform texture is achieved in the finished surface of the Rapid Setting Slurry Seal.

Flexible fabric drags attached to the rear of the spreader box shall not be allowed. Strike-off blades (rubber) shall be cleaned or changed daily if problems with cleanliness and longitudinal scouring occur.

318.05 – COMPOSITION, RATE OF APPLICATION, AND TOLERANCES

1. Composition

The percentage of each individual material shall be as required by the mix design. Adjustments may be required during construction, based on field condition. The Engineer will give final approval for all such adjustments.

2. Rate of Application

The Rapid Setting Slurry Seal mixture shall be of proper consistency at all times so as to provide the amount of mixture required by the surface condition. The Rapid Setting Slurry Seal mixture shall be uniformly spread on the existing surface within the rate specified herein:

The minimum anticipated application rate of Type II Rapid Setting Slurry Seal shall be 12 lb/yds².

318.06 – LIMITATIONS

1. Weather

The Rapid Setting Slurry Seal shall not be applied unless both the pavement and air temperatures are 55°F (13°C) and rising. *The Rapid Setting Slurry Seal shall not be applied when the air temperature is over 100°F (38°C).* No Rapid Setting Slurry Seal shall be applied when there is danger that the finished product will freeze before 24 hours has passed. No Rapid Setting Slurry Seal shall be applied when precipitation is imminent. No Rapid Setting Slurry Seal shall be applied when the forecasted daytime temperatures are less than 60°F (15°C) for next five (5) consecutive days. The mixture shall be applied such that traffic shall be allowed on the Rapid Setting Slurry Sealed roadways before 5:00 PM unless otherwise specified by the Project Coordinator.

318.07 – PREPARATION OF THE SURFACE

Immediately prior to applying the Rapid Setting Slurry Seal, the surface shall be cleared of all loose materials, dust, gravel, silt spots, vegetation, oil spots and other objectionable material. Immediately before commencing the Rapid Setting Slurry Seal operations, manholes, valve boxes, drop inlets and other service entrances shall be protected from the surface seal by a suitable method. All surface metal utility covers (including survey monuments) shall be protected by thoroughly covering the surface with an appropriate adhesive and oiled or plastic paper.

Areas as shown on the plans that require placement of a double Rapid Setting Slurry Seal shall be cleaned of all loose material including but not limited to asphalt, debris and vegetation to a smooth and uniform surface, and placement of an SS1h (50/50 blend) at a minimum application of .15 gls/sqyd. SS1h shall be placed prior to placement of the first application of the Rapid Setting Slurry Seal.

318.08 – APPLICATION OF RAPID SETTING SLURRY SEAL

1. General

All workmen shall have sufficient skill and experience to properly perform the work assigned to them. Workmen engaged in special or skilled works shall have sufficient experience in such work and in the operation of the equipment to perform all work properly and satisfactorily. Thus the Contractor shall have an experienced crew on each spreader and any other equipment. Work hours are from 7:00 AM to 3:00 PM with no exceptions unless approved by the Project Coordinator.

The surface should be pre-wetted by fogging ahead of the slurry box when required by local conditions. Water used in pre-wetting the surface shall be applied such that the entire surface is damp with no apparent flowing water in front of the slurry box. The rate of application of the fog spray shall be adjusted during the day to suit temperatures, surface texture, humidity and dryness of the pavement surface.

The Rapid Setting Slurry Seal mixture shall be of the desired consistency upon leaving the pugmill and no additional materials shall be added. A sufficient amount of Rapid Setting Slurry Seal shall be carried in all parts of the spreader at all times so that complete coverage is obtained. Overloading of the spreader shall be avoided. No lumping, balling or unmixed aggregate shall be permitted.

2. Hand Work

Areas which cannot be reached with the Rapid Setting Slurry Seal machine shall be surfaced using hand squeegees to provide complete and uniform Rapid Setting Slurry Seal coverage. The area to be hand worked shall be lightly dampened prior to mix placement and the Rapid Setting Slurry Seal worked immediately. Care shall be exercised to leave no unsightly appearance from handwork. The same type finish as applied by the spreader box shall be required. Handwork shall be completed during the machine applying process.

3. Lines

Care shall be taken to insure straight lines along driveways, curbs, shoulders and intersections. No runoff on these areas will be permitted. Lines at intersections will be kept straight to provide a good appearance.

4. Clean-Up

All areas, such as driveways and gutters, shall have the Rapid Setting Slurry Seal removed as specified by the Project Coordinator. The Contractor shall remove any debris associated with the performance of the work, on a daily basis. *Excess aggregate shall be removed after work is completed at each staging area. Areas that have been sanded shall be initially swept clean within twelve (12) hours after traffic control is removed.* The contractor shall be responsible for cleaning all ravel and loose materials resulting from the Rapid Setting Slurry Seal for a period of 21 days after placement. Subsequent sweeping after 21 days if required by the City of Sparks Project Coordinator shall be included and considered incidental to this item.

318.10 – BASIS OF PAYMENT - Refer to bid item clarification.

The payment shall be full compensation for furnishing all materials and for all preparation, mixing and applying these materials, and for all labor, equipment, traffic control, sweeping, cleaning, crack sealing, placement of SS1h, double slurry coats (if required), mobilization, tools, test design, clean-up and incidentals necessary to complete and warranty the job as specified herein.

SECTION 324 – PAINTING, PAVEMENT STRIPING AND MARKINGS

324.02 – MATERIALS

Refer to Bid Item Clarification

324.02.05 – NUMBER OF COATS

1. Add the following:

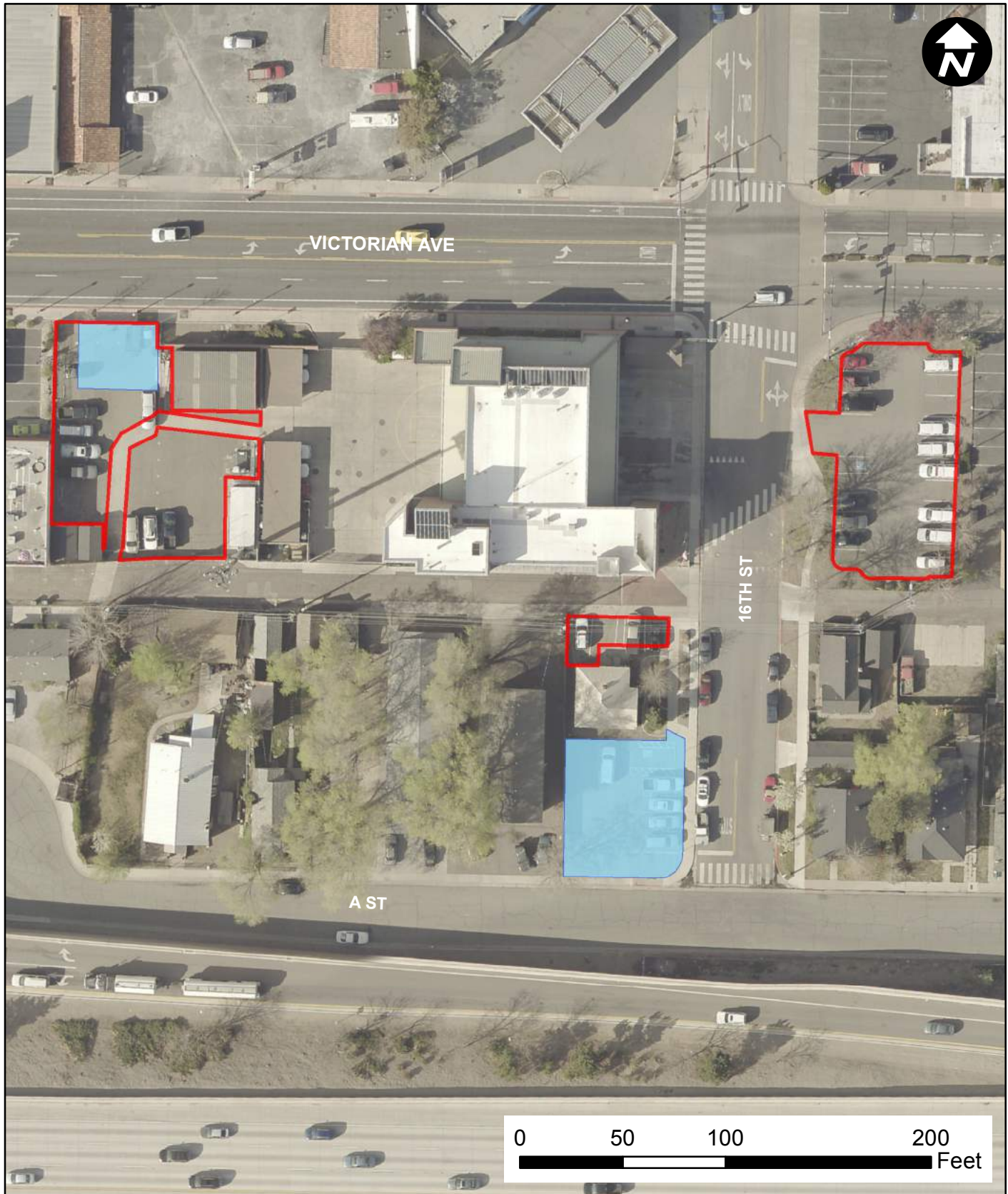
All traffic paint shall have a minimum of two (2) coats (full width of stripe) per application of the designated material placed unless otherwise directed by the Project Coordinator.

324.13 – MEASUREMENT OF QUANTITIES AND BASIS OF PAYMENT

Refer to Bid Item Clarification

No direct payment will be made to remove any existing striping. Compensation for this work shall be included in other bid items.

No direct payment will be made for placing and maintaining temporary traffic reflecting tabs. This work is considered incidental to the project. Compensation for this work shall be included in other bid items.



Base Bid Sparks Fire Station 1

West Parking Lot:

- Type II Rapid Setting Slurry Seal - 6,267 sqft
- Double Type II Rapid Setting Slurry Seal - 1,255 sqft

North Parking Lot:

- Type II Rapid Setting Slurry Seal - 830.6 sqft

South Parking Lot:

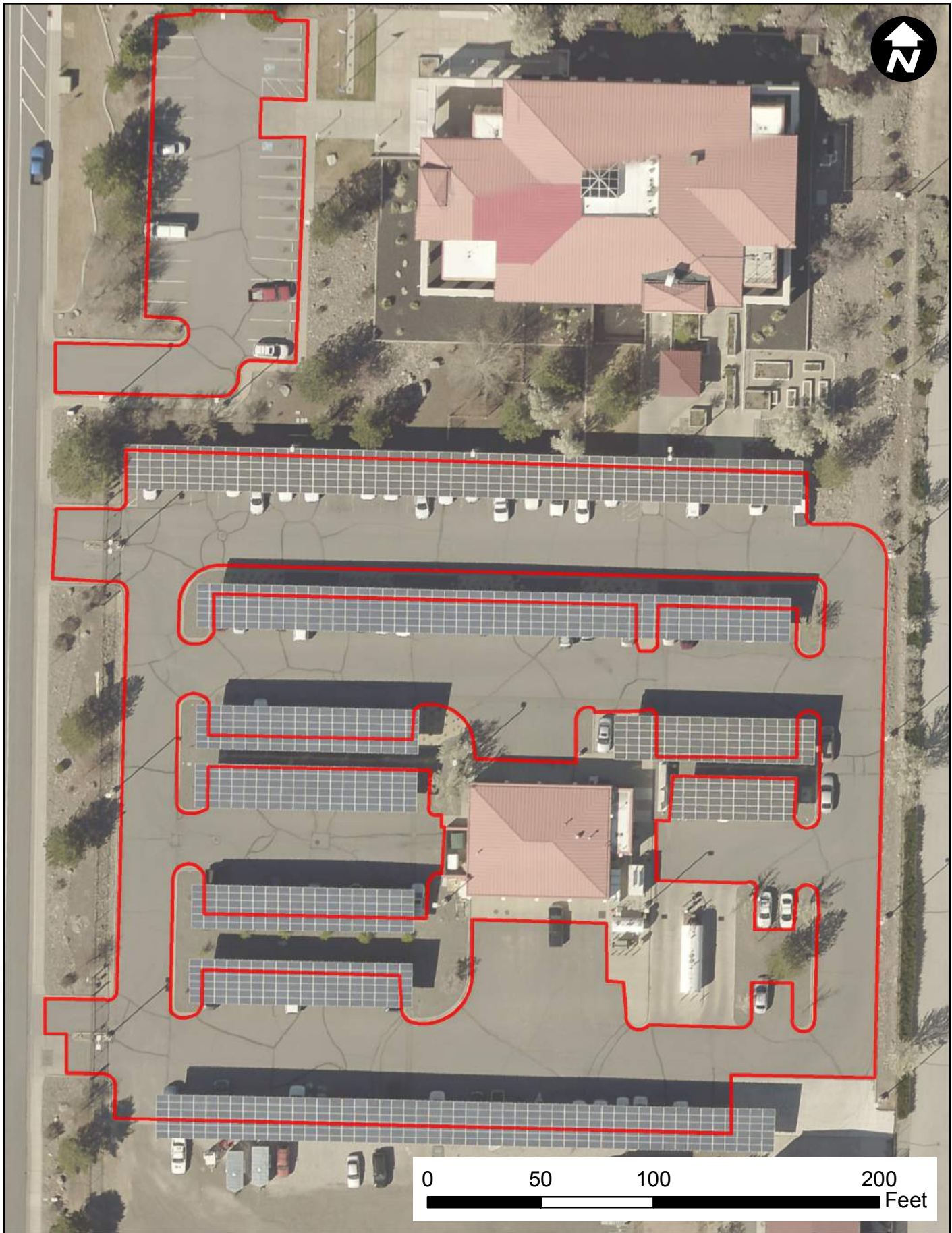
- Double Type II Rapid Setting Slurry Seal - 3,871 sqft

East Parking Lot:

- Type II Rapid Setting Slurry Seal - 6,735 sqft

Surface Treatment

- Type II Rapid Setting Slurry Seal
- Double Type II Rapid Setting Slurry Seal



Sparks Police Department


Option #1 - North Parking Lot:

Type II Rapid Setting Slurry Seal - 11,338 sqft

Option #2 - South Parking Lot:

Type II Rapid Setting Slurry Seal - 73,590 sqft

Surface Treatment

 Type II Rapid Setting Slurry Seal